



MS. GOMES



THE power OF yet!



WELCOME TO RHA 9TH GRADE
GLOBAL STUDIES



TriWizard
Tournament

Per 2

Per 7

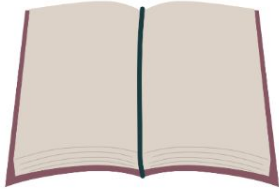
Per 8

CTE



SCROLL OVER OBJECTS AND EXPLORE MY DIGITAL CLASSROOM!

Course Description



This course focuses on understanding various cultures around the world and how they have changed over time. We will explore the birth of civilizations and the development of Europe, Africa, Asia, Middle East and other regions.

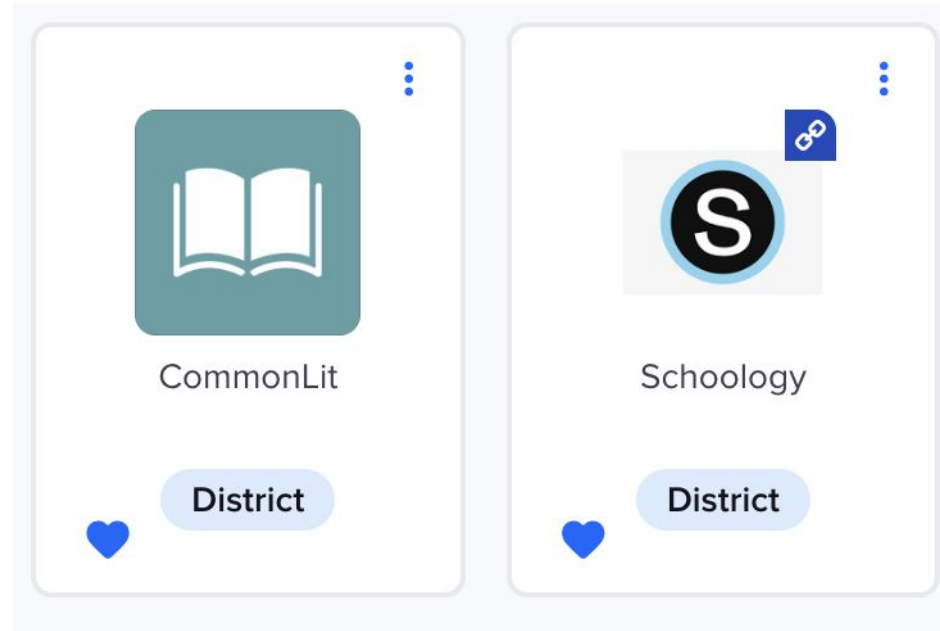
Course Overview Logistics:

- 2 year course
- Grade 9 – Global Studies I
- Grade 10 – Global Studies II
- Culminates with a NYS Regents Exam



WHAT TOOLS WILL WE USE?

- ❑ Schoology
- ❑ CommonLit
- ❑ HMH online text & Class Set



WHAT TOOLS WILL WE USE?



Contents

Unit 1: The Basics of Geography



Play Audio



Review



Notes



More

Go to Page: Go

- > Introduction
- > Unit 1: The Basics of Geography
- > Unit 2: The United States and Canada
- > Unit 3: Latin America
- > Unit 4: Europe
- > Unit 5: Russia and the Republics
- > Unit 6: Africa
- > Unit 7: Southwest Asia
- > Unit 8: South Asia
- > Unit 9: East Asia
- > Unit 10: Southeast Asia, Oceania, and

Unit



The Basics of Geography

The earth is a unique planet capable of supporting a wide variety of life forms. Human beings adapt and alter the environments on earth.

PHYSICAL AND HUMAN GEOGRAPHY

Chapter 1
PHYSICAL GEOGRAPHY
Looking at the Earth

GEOGRAPHY SKILLS HANDBOOK

Chapter 2
PHYSICAL GEOGRAPHY
A Living Planet

Chapter 3
PHYSICAL GEOGRAPHY
Climate and Vegetation

Chapter 4
HUMAN GEOGRAPHY
People and Places



PHYSICAL GEOGRAPHY Internal and external forces constantly change the earth's surface. Here the volcano Arenal, located in Costa Rica, spews molten lava.

GeoData

PHYSICAL GEOGRAPHY The earth is not round but is slightly flattened at the poles.

PHYSICAL GEOGRAPHY The total distance from the highest point on earth, Mt. Everest (29,035 ft.), to the lowest point on earth, Mariana Trench (35,840 ft. below sea level), is just over 12 miles.

HUMAN GEOGRAPHY The world's population growth in 2011 was an additional 83 million people, or about 227,000 people per day.



HUMAN GEOGRAPHY Global population topped the 7 billion mark in 2011. The baby pictured here was officially identified by the United Nations.

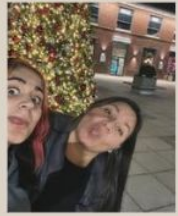
Comes Overview



- **16th Year in Education**
- Started teaching at White Plains High School (1 year)
- 2 years at Yonkers High School
- 13 years 8th grade Enrico Fermi

- Daughter - also In Education

1. Boxer mom 🐶
2. Coffee ☕ ❤️
3. Travel flight ✈️ - Disney APH
4. +38k p/v 📷 🎥
5. IG candid - digital yrbk 📱
6. 🇫🇷 🇺🇸



First PBL
will cover
these
units of
study

Units of Study

First Civilizations

Transformation In Europe

Classical Civilizations

African Empires

Medieval Europe

MesoAmerica

Ottoman & Ming Empires

Age of Exploration





PROJECT BASED LEARNING:
"BLUE PRINT SOCIETIES"
(CREATE YOUR OWN DYSTOPIAN SOCIETY)

Grading Scale

40%

Formative Assessments

Quizzes, homework,
and in-class activities

50%

Summative Assessments

Projects, essays, and
exams

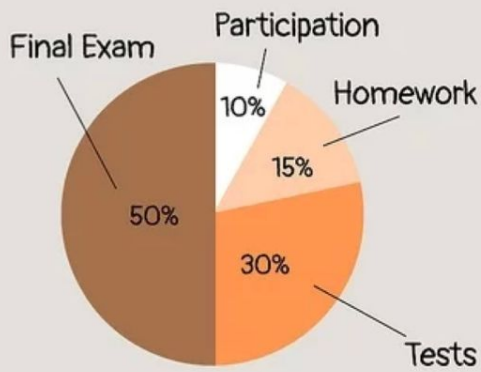
10%

Engagement & Participation

In-class discussions,
group activities,
collaboration

Grading Scale

WEIGHTED GRADE SYSTEM



Weighted - Graded Items are assigned to categories. Each category is assigned a percentage of the overall final grade totaling 100%

This is done for EACH marking period.

There are a total of 4 marking periods

PASSING GRADES INCLUDES ALL NUMERICAL GRADES RANGING FROM 65-100

FAILING GRADES INCLUDES ALL NUMERICAL GRADES RANGING FROM 50-64

REPORT CARDS ARE GIVEN 4X PER YEAR. YOU CAN MONITOR YOUR GRADES THROUGH POWERSCHOOL'S STUDENT PORTAL.

Late Work Policy



- Turn in by DUE DATE!
- Work not submitted at time of grading will be marked a ZERO (Placeholder).
- If work is reviewed during class, assignment will no longer be accepted
- Most work will begin in class.



MY TWO cents ...

- CAN YOU SHOW ME YOUR NOTEBOOK?
- HS GRADUATION IS CLOSER THAN YOU THINK ... ENJOY THIS TIME! JOIN TEAMS & CLUBS!



RHA CLUBS

STUDENT COUNCIL

Student Council will be offered to interested and committed 9th graders after school. Student Council will work to communicate school needs and interests. These responsibilities include fundraising, community service, RHA event planning etc.



GAME CLUB

Students will have the opportunity to participate in a variety of board and card games during 6th period lunch to build relationships and friendly competition.



PODCAST / NEWSLETTER

Students will be able to write scripts for student led podcasts to discuss topics of interest and reporting on school or related events. There will also be an opportunity for students to set up filming and editing using multimedia technology. Students will also be able learn investigative reporting and photography to create monthly RHA newsletters. This will be offered after school.



DEBATE CLUB

Students will have the opportunity to meet after school to learn the art of academic debating by practicing communication skills. Friendly competitions on a variety of topics. This club will be offered after school.



ORCHESTRA / BOOK CLUB



WHERE CAN I FIND INFORMATION?



ROBERT HALMI SR.
ACADEMY OF
FILM AND TELEVISION

Students

Families

Staff



HOME

OUR SCHOOL

TEACHERS

ENTRANCE & TASK SUPPORT

NEWS

CALENDAR

RHA SPOTLIGHT

RHA Application & Admission

Ribbon Cutting Ceremony

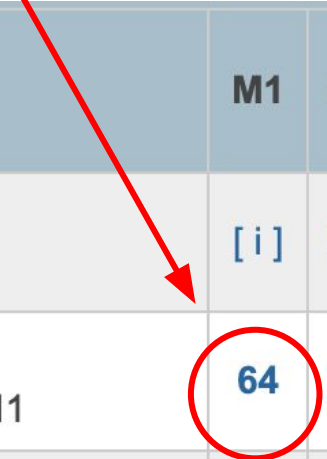
CLEVER Portal

PowerSchool Parent Portal

Student Immunizations



WHY DO I HAVE THIS GRADE?



Course	M1	M2	M0	M3	M4	E1	Y1	Absences		Tardies	
								24-25	24-25	24-25	24-25
Phys. Ed. 9 Bryant, Kyler - Rm: GYM	[i]	[i]	[i]	[i]	[i]	[i]	[i]	1	1	0	0
World Hist. - Overview Gomes, Michelle - Rm: 211	64	[i]	57	[i]	[i]	[i]	57	6	6	0	0
Studio Art Rustin, Jude - Rm: 313	[i]	[i]	[i]	[i]	[i]	[i]	[i]	3	3	0	0
Earth and Space Sci./R Ford, Jessica L - Rm: 319	100	[i]	100	[i]	[i]	[i]	100	2	2	1	1

Course	Teacher	Expression	Term	Final Grade ¹
World Hist. - Overview	Gomes, Michelle	P2(A-F)	M1	64

Teacher Comments:




Section Description:

CURRENT GPA

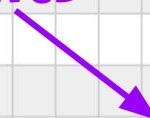
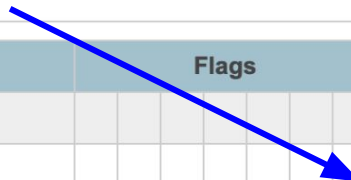


**GRADE NOT INPUT
YET BY TEACHER**

PowerTeacher Pro Assignments

Due Date	Category	Assignment	Flags	Score	Grade	 
09/26/2024	Classwork	Do Now geographer 1		100/100	100	
09/26/2024	Homework	Student Contracts Admin		0/100	0	
09/24/2024	Summative	Hispanic Heritage		--/100		
09/22/2024	Summative	Enduring Issues One Pager		80/100	80	
09/22/2024	Formative	Written Analysis Enduring Issues		--/100		
09/20/2024	Formative	Organizer Hispanic PBL		100/100	100	
09/16/2024	Formative	Unit 1 primary secondary		50/100	50	
09/16/2024	Engagement	Unit 1 vocab CW		80/100	80	
09/12/2024	Engagement	Do now PC 9/11		100/100	100	
09/11/2024	Formative	HW Debate notes		0/100 	0	View
09/10/2024	Formative	Course Syllabus		0/100	0	

**ASSIGNMENT NOT
TURNED IN WHEN
GRADED/COLLECTED**



IMPORTANT WEBSITES AND CONTACT INFORMATION/ SITIOS WEB IMPORTANTES E INFORMACIÓN DE CONTACTO

** Please contact me via email if necessary. ALL students have an email address with the district.

EX:
12345@yonkerspublicschools.org



WWW.OUTLOOK.COM

mgomes@yonkers
publicschools.org



[HTTPS://YONKERSPS.POWERSCHOOL.COM/PUBLIC/](https://yonkersps.powerschool.com/public/)

To view grades and attendance.

**Login using your ID# and PW is
student district PW.**



INSTAGRAM

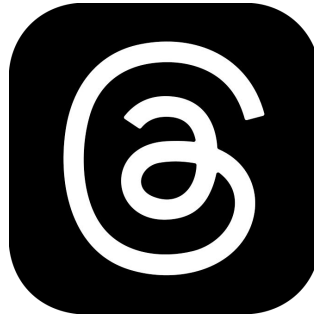
@msgomesteach

**SIGUEME EN LAS
REDES SOCIALES**

**FOLLOW ME ON
SOCIAL MEDIA**



msgomesteach



msgomesteach

Student and Parent Sign In

[Sign In](#)[Create Account](#)

Select Language

English

Username

**STUDENT
DISTRICT PW**

Password

**OR
MMDDYYYY**

[Forgot Username or Password?](#)

[Sign In](#)

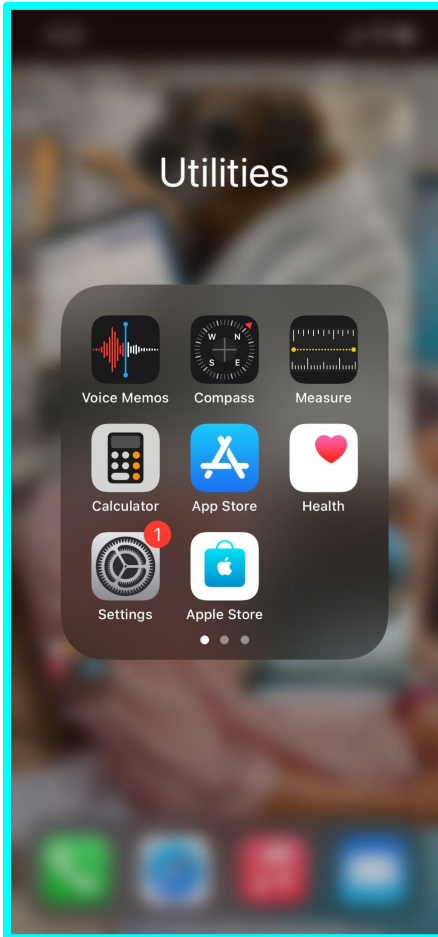
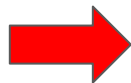
STUDENTS: To sign in, your **6 Digit ID** is your Username and your Password is your network password used at school.

What can I use
it for?

- Grades
- Attendance

STEP

1

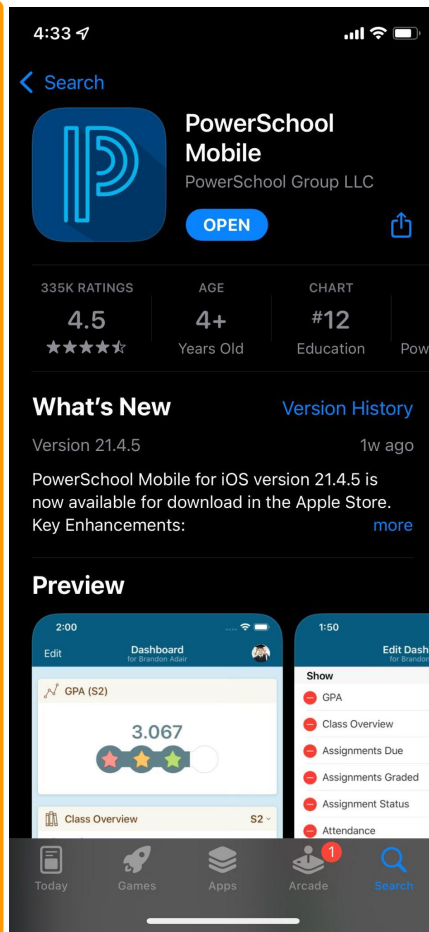
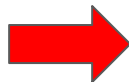


PASO

1

STEP

2

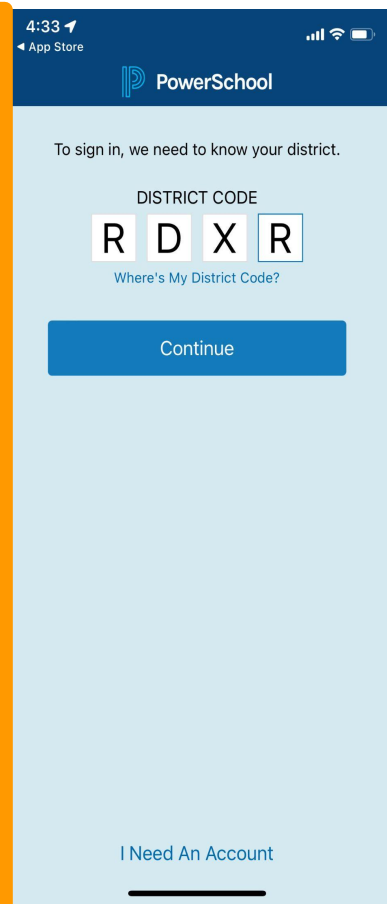


PASO

2

STEP

3



PASO

3

LOGIN!

**Attendance
Grades**



YONKERS
PUBLIC SCHOOLS



PowerSchool SIS

Student and Parent Sign In

6 DIGIT STUDENT ID #
EX: 123456

Sign In

Create Account

Select Language

English

Username

**STUDENT
DISTRICT PW**

Password

**OR
MMDDYYYY**

[Forgot Username or Password?](#)

Sign In

STUDENTS: To sign in, your **6 Digit ID** is your Username and your Password is your network password used at school.